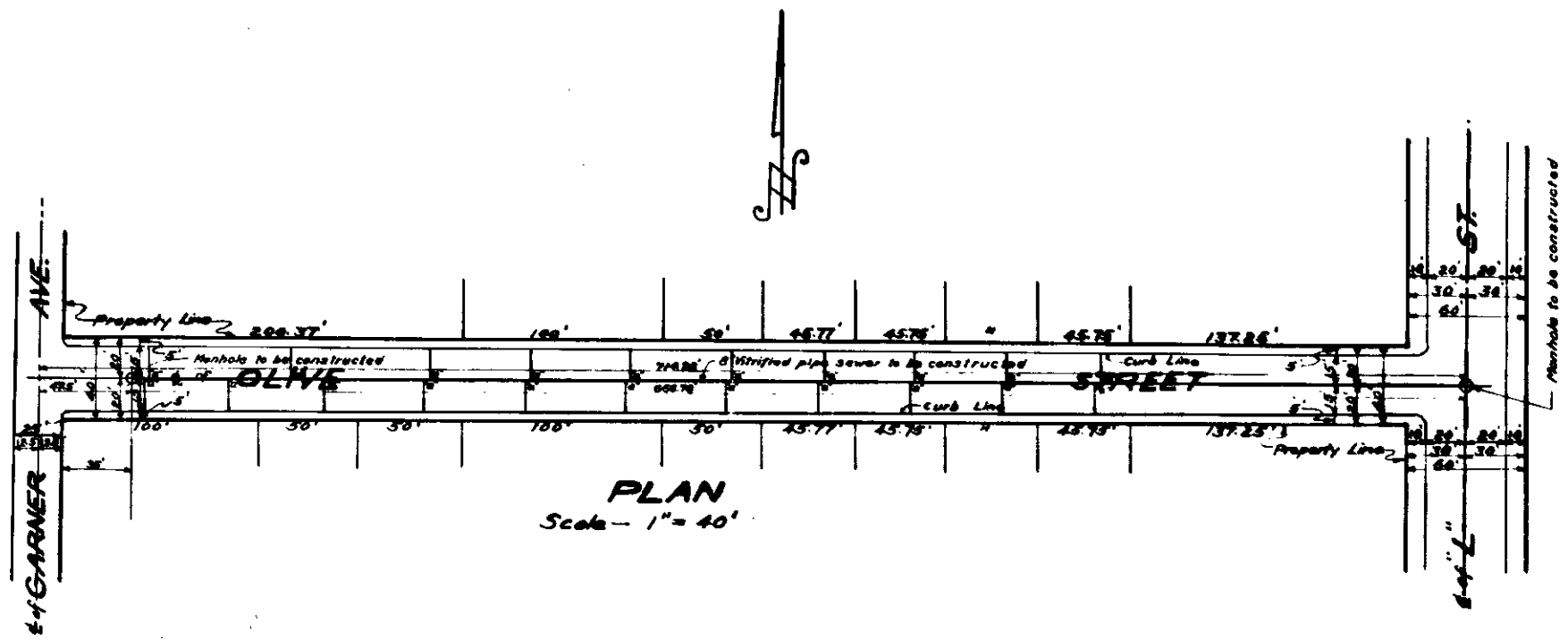


SHEET NO. 1  
 PLAN NO. 1593  
 FOR  
**OLIVE STREET SEWER**  
 FROM  
 "L" ST. TO GARNER AVE.  
 CITY OF SAN BERNARDINO  
 CALIFORNIA

MARCH 1947

R.D. FORSYTHE  
Acting City Engineer

PLAN ADOPTED October 20, 1947

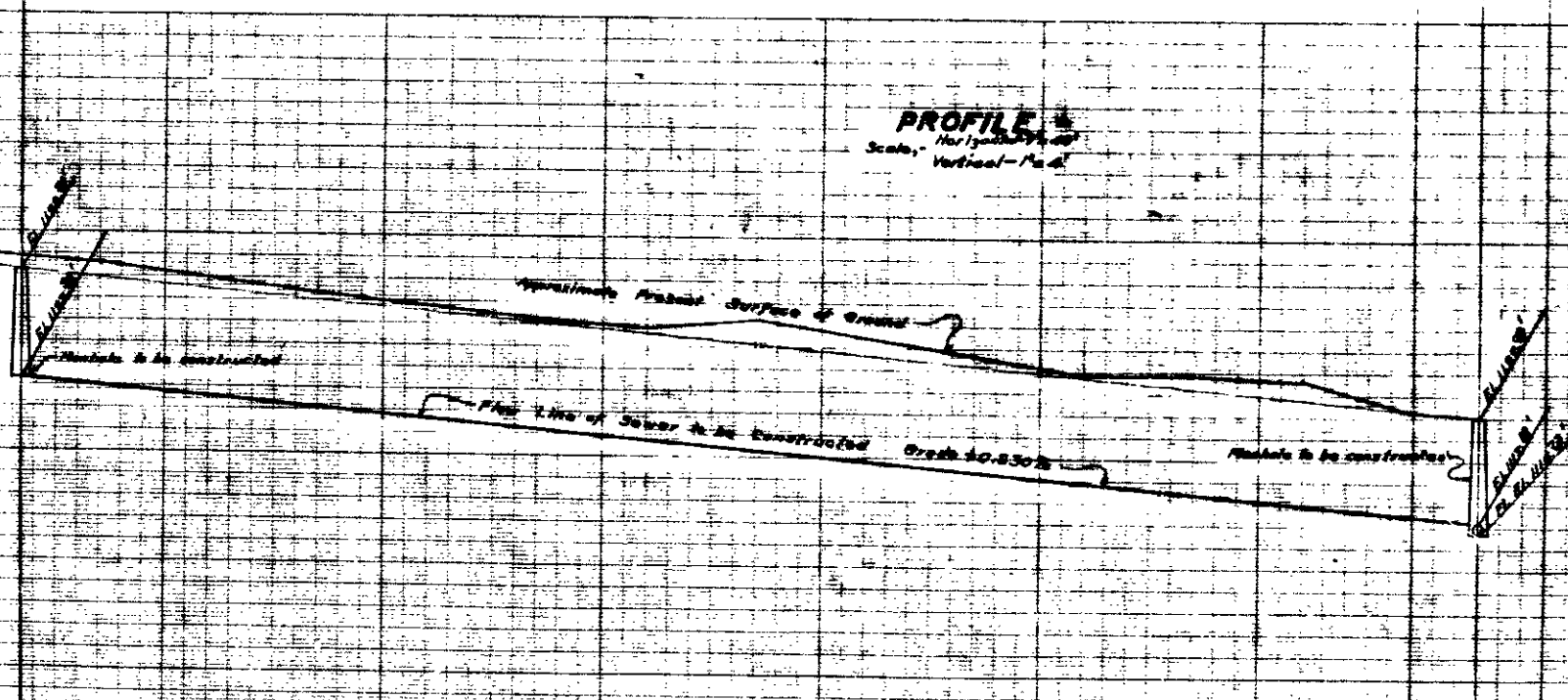


**LEGEND**

1" or 1 1/2" manhole 12" or 18" manhole  
 12" manhole 18" manhole  
 24" manhole 30" manhole  
 36" manhole 42" manhole  
 48" manhole 54" manhole  
 60" manhole 66" manhole  
 72" manhole 78" manhole  
 84" manhole 90" manhole  
 96" manhole 102" manhole  
 108" manhole 114" manhole  
 120" manhole 126" manhole  
 132" manhole 138" manhole  
 144" manhole 150" manhole  
 156" manhole 162" manhole  
 168" manhole 174" manhole  
 180" manhole 186" manhole  
 192" manhole 198" manhole  
 204" manhole 210" manhole  
 216" manhole 222" manhole  
 228" manhole 234" manhole  
 240" manhole 246" manhole  
 252" manhole 258" manhole  
 264" manhole 270" manhole  
 276" manhole 282" manhole  
 288" manhole 294" manhole  
 300" manhole 306" manhole  
 312" manhole 318" manhole  
 324" manhole 330" manhole  
 336" manhole 342" manhole  
 348" manhole 354" manhole  
 360" manhole 366" manhole  
 372" manhole 378" manhole  
 384" manhole 390" manhole  
 396" manhole 402" manhole  
 408" manhole 414" manhole  
 420" manhole 426" manhole  
 432" manhole 438" manhole  
 444" manhole 450" manhole  
 456" manhole 462" manhole  
 468" manhole 474" manhole  
 480" manhole 486" manhole  
 492" manhole 498" manhole  
 504" manhole 510" manhole  
 516" manhole 522" manhole  
 528" manhole 534" manhole  
 540" manhole 546" manhole  
 552" manhole 558" manhole  
 564" manhole 570" manhole  
 576" manhole 582" manhole  
 588" manhole 594" manhole  
 600" manhole 606" manhole  
 612" manhole 618" manhole  
 624" manhole 630" manhole  
 636" manhole 642" manhole  
 648" manhole 654" manhole  
 660" manhole 666" manhole  
 672" manhole 678" manhole  
 684" manhole 690" manhole  
 696" manhole 702" manhole  
 708" manhole 714" manhole  
 720" manhole 726" manhole  
 732" manhole 738" manhole  
 744" manhole 750" manhole  
 756" manhole 762" manhole  
 768" manhole 774" manhole  
 780" manhole 786" manhole  
 792" manhole 798" manhole  
 804" manhole 810" manhole  
 816" manhole 822" manhole  
 828" manhole 834" manhole  
 840" manhole 846" manhole  
 852" manhole 858" manhole  
 864" manhole 870" manhole  
 876" manhole 882" manhole  
 888" manhole 894" manhole  
 900" manhole 906" manhole  
 912" manhole 918" manhole  
 924" manhole 930" manhole  
 936" manhole 942" manhole  
 948" manhole 954" manhole  
 960" manhole 966" manhole  
 972" manhole 978" manhole  
 984" manhole 990" manhole  
 996" manhole 1002" manhole

**SEWER DETAIL**

Line 12" of 8" vitrified pipe sewer to be constructed  
 Line 18" of 12" vitrified pipe sewer to be constructed  
 Line 24" of 18" vitrified pipe sewer to be constructed  
 Line 30" of 24" vitrified pipe sewer to be constructed  
 Line 36" of 30" vitrified pipe sewer to be constructed  
 Line 42" of 36" vitrified pipe sewer to be constructed  
 Line 48" of 42" vitrified pipe sewer to be constructed  
 Line 54" of 48" vitrified pipe sewer to be constructed  
 Line 60" of 54" vitrified pipe sewer to be constructed  
 Line 66" of 60" vitrified pipe sewer to be constructed  
 Line 72" of 66" vitrified pipe sewer to be constructed  
 Line 78" of 72" vitrified pipe sewer to be constructed  
 Line 84" of 78" vitrified pipe sewer to be constructed  
 Line 90" of 84" vitrified pipe sewer to be constructed  
 Line 96" of 90" vitrified pipe sewer to be constructed  
 Line 102" of 96" vitrified pipe sewer to be constructed  
 Line 108" of 102" vitrified pipe sewer to be constructed  
 Line 114" of 108" vitrified pipe sewer to be constructed  
 Line 120" of 114" vitrified pipe sewer to be constructed  
 Line 126" of 120" vitrified pipe sewer to be constructed  
 Line 132" of 126" vitrified pipe sewer to be constructed  
 Line 138" of 132" vitrified pipe sewer to be constructed  
 Line 144" of 138" vitrified pipe sewer to be constructed  
 Line 150" of 144" vitrified pipe sewer to be constructed  
 Line 156" of 150" vitrified pipe sewer to be constructed  
 Line 162" of 156" vitrified pipe sewer to be constructed  
 Line 168" of 162" vitrified pipe sewer to be constructed  
 Line 174" of 168" vitrified pipe sewer to be constructed  
 Line 180" of 174" vitrified pipe sewer to be constructed  
 Line 186" of 180" vitrified pipe sewer to be constructed  
 Line 192" of 186" vitrified pipe sewer to be constructed  
 Line 198" of 192" vitrified pipe sewer to be constructed  
 Line 204" of 198" vitrified pipe sewer to be constructed  
 Line 210" of 204" vitrified pipe sewer to be constructed  
 Line 216" of 210" vitrified pipe sewer to be constructed  
 Line 222" of 216" vitrified pipe sewer to be constructed  
 Line 228" of 222" vitrified pipe sewer to be constructed  
 Line 234" of 228" vitrified pipe sewer to be constructed  
 Line 240" of 234" vitrified pipe sewer to be constructed  
 Line 246" of 240" vitrified pipe sewer to be constructed  
 Line 252" of 246" vitrified pipe sewer to be constructed  
 Line 258" of 252" vitrified pipe sewer to be constructed  
 Line 264" of 258" vitrified pipe sewer to be constructed  
 Line 270" of 264" vitrified pipe sewer to be constructed  
 Line 276" of 270" vitrified pipe sewer to be constructed  
 Line 282" of 276" vitrified pipe sewer to be constructed  
 Line 288" of 282" vitrified pipe sewer to be constructed  
 Line 294" of 288" vitrified pipe sewer to be constructed  
 Line 300" of 294" vitrified pipe sewer to be constructed  
 Line 306" of 300" vitrified pipe sewer to be constructed  
 Line 312" of 306" vitrified pipe sewer to be constructed  
 Line 318" of 312" vitrified pipe sewer to be constructed  
 Line 324" of 318" vitrified pipe sewer to be constructed  
 Line 330" of 324" vitrified pipe sewer to be constructed  
 Line 336" of 330" vitrified pipe sewer to be constructed  
 Line 342" of 336" vitrified pipe sewer to be constructed  
 Line 348" of 342" vitrified pipe sewer to be constructed  
 Line 354" of 348" vitrified pipe sewer to be constructed  
 Line 360" of 354" vitrified pipe sewer to be constructed  
 Line 366" of 360" vitrified pipe sewer to be constructed  
 Line 372" of 366" vitrified pipe sewer to be constructed  
 Line 378" of 372" vitrified pipe sewer to be constructed  
 Line 384" of 378" vitrified pipe sewer to be constructed  
 Line 390" of 384" vitrified pipe sewer to be constructed  
 Line 396" of 390" vitrified pipe sewer to be constructed  
 Line 402" of 396" vitrified pipe sewer to be constructed  
 Line 408" of 402" vitrified pipe sewer to be constructed  
 Line 414" of 408" vitrified pipe sewer to be constructed  
 Line 420" of 414" vitrified pipe sewer to be constructed  
 Line 426" of 420" vitrified pipe sewer to be constructed  
 Line 432" of 426" vitrified pipe sewer to be constructed  
 Line 438" of 432" vitrified pipe sewer to be constructed  
 Line 444" of 438" vitrified pipe sewer to be constructed  
 Line 450" of 444" vitrified pipe sewer to be constructed  
 Line 456" of 450" vitrified pipe sewer to be constructed  
 Line 462" of 456" vitrified pipe sewer to be constructed  
 Line 468" of 462" vitrified pipe sewer to be constructed  
 Line 474" of 468" vitrified pipe sewer to be constructed  
 Line 480" of 474" vitrified pipe sewer to be constructed  
 Line 486" of 480" vitrified pipe sewer to be constructed  
 Line 492" of 486" vitrified pipe sewer to be constructed  
 Line 498" of 492" vitrified pipe sewer to be constructed  
 Line 504" of 498" vitrified pipe sewer to be constructed  
 Line 510" of 504" vitrified pipe sewer to be constructed  
 Line 516" of 510" vitrified pipe sewer to be constructed  
 Line 522" of 516" vitrified pipe sewer to be constructed  
 Line 528" of 522" vitrified pipe sewer to be constructed  
 Line 534" of 528" vitrified pipe sewer to be constructed  
 Line 540" of 534" vitrified pipe sewer to be constructed  
 Line 546" of 540" vitrified pipe sewer to be constructed  
 Line 552" of 546" vitrified pipe sewer to be constructed  
 Line 558" of 552" vitrified pipe sewer to be constructed  
 Line 564" of 558" vitrified pipe sewer to be constructed  
 Line 570" of 564" vitrified pipe sewer to be constructed  
 Line 576" of 570" vitrified pipe sewer to be constructed  
 Line 582" of 576" vitrified pipe sewer to be constructed  
 Line 588" of 582" vitrified pipe sewer to be constructed  
 Line 594" of 588" vitrified pipe sewer to be constructed  
 Line 600" of 594" vitrified pipe sewer to be constructed  
 Line 606" of 600" vitrified pipe sewer to be constructed  
 Line 612" of 606" vitrified pipe sewer to be constructed  
 Line 618" of 612" vitrified pipe sewer to be constructed  
 Line 624" of 618" vitrified pipe sewer to be constructed  
 Line 630" of 624" vitrified pipe sewer to be constructed  
 Line 636" of 630" vitrified pipe sewer to be constructed  
 Line 642" of 636" vitrified pipe sewer to be constructed  
 Line 648" of 642" vitrified pipe sewer to be constructed  
 Line 654" of 648" vitrified pipe sewer to be constructed  
 Line 660" of 654" vitrified pipe sewer to be constructed  
 Line 666" of 660" vitrified pipe sewer to be constructed  
 Line 672" of 666" vitrified pipe sewer to be constructed  
 Line 678" of 672" vitrified pipe sewer to be constructed  
 Line 684" of 678" vitrified pipe sewer to be constructed  
 Line 690" of 684" vitrified pipe sewer to be constructed  
 Line 696" of 690" vitrified pipe sewer to be constructed  
 Line 702" of 696" vitrified pipe sewer to be constructed  
 Line 708" of 702" vitrified pipe sewer to be constructed  
 Line 714" of 708" vitrified pipe sewer to be constructed  
 Line 720" of 714" vitrified pipe sewer to be constructed  
 Line 726" of 720" vitrified pipe sewer to be constructed  
 Line 732" of 726" vitrified pipe sewer to be constructed  
 Line 738" of 732" vitrified pipe sewer to be constructed  
 Line 744" of 738" vitrified pipe sewer to be constructed  
 Line 750" of 744" vitrified pipe sewer to be constructed  
 Line 756" of 750" vitrified pipe sewer to be constructed  
 Line 762" of 756" vitrified pipe sewer to be constructed  
 Line 768" of 762" vitrified pipe sewer to be constructed  
 Line 774" of 768" vitrified pipe sewer to be constructed  
 Line 780" of 774" vitrified pipe sewer to be constructed  
 Line 786" of 780" vitrified pipe sewer to be constructed  
 Line 792" of 786" vitrified pipe sewer to be constructed  
 Line 798" of 792" vitrified pipe sewer to be constructed  
 Line 804" of 798" vitrified pipe sewer to be constructed  
 Line 810" of 804" vitrified pipe sewer to be constructed  
 Line 816" of 810" vitrified pipe sewer to be constructed  
 Line 822" of 816" vitrified pipe sewer to be constructed  
 Line 828" of 822" vitrified pipe sewer to be constructed  
 Line 834" of 828" vitrified pipe sewer to be constructed  
 Line 840" of 834" vitrified pipe sewer to be constructed  
 Line 846" of 840" vitrified pipe sewer to be constructed  
 Line 852" of 846" vitrified pipe sewer to be constructed  
 Line 858" of 852" vitrified pipe sewer to be constructed  
 Line 864" of 858" vitrified pipe sewer to be constructed  
 Line 870" of 864" vitrified pipe sewer to be constructed  
 Line 876" of 870" vitrified pipe sewer to be constructed  
 Line 882" of 876" vitrified pipe sewer to be constructed  
 Line 888" of 882" vitrified pipe sewer to be constructed  
 Line 894" of 888" vitrified pipe sewer to be constructed  
 Line 900" of 894" vitrified pipe sewer to be constructed  
 Line 906" of 900" vitrified pipe sewer to be constructed  
 Line 912" of 906" vitrified pipe sewer to be constructed  
 Line 918" of 912" vitrified pipe sewer to be constructed  
 Line 924" of 918" vitrified pipe sewer to be constructed  
 Line 930" of 924" vitrified pipe sewer to be constructed  
 Line 936" of 930" vitrified pipe sewer to be constructed  
 Line 942" of 936" vitrified pipe sewer to be constructed  
 Line 948" of 942" vitrified pipe sewer to be constructed  
 Line 954" of 948" vitrified pipe sewer to be constructed  
 Line 960" of 954" vitrified pipe sewer to be constructed  
 Line 966" of 960" vitrified pipe sewer to be constructed  
 Line 972" of 966" vitrified pipe sewer to be constructed  
 Line 978" of 972" vitrified pipe sewer to be constructed  
 Line 984" of 978" vitrified pipe sewer to be constructed  
 Line 990" of 984" vitrified pipe sewer to be constructed  
 Line 996" of 990" vitrified pipe sewer to be constructed  
 Line 1002" of 996" vitrified pipe sewer to be constructed



**TITLE TO STREETS**

Olive Street was deeded to the City of San Bernardino (see Memorandum by deed dated November 23rd 1926 and recorded in Book 176 Page 176 December 20th 1926, official records of the County of San Bernardino, Calif. Name was changed to Olive Street by Resolution No. 163 of the Board of San Bernardino, dated November 3rd 1930

**-GRADE RESOLUTION-**

Grade of OLIVE STREET was established by Resolution No. 156 of the City of San Bernardino, California

**DATUM**

All Elevations shown in feet and inches are above a plane which is 1044.28 feet below the City Bench Mark as established by Ordinance 308 of the City of San Bernardino, California.

**NOTE** All Vitrified Pipe Sewer shall be constructed on an upward grade of 1/4" per foot from the manholes and shall extend from the manholes to the curb line, and shall be constructed at right angles to the main sewer.

**PROFILE LEGEND**

Approximate Present Surface of Ground shown by Black Line Thus  
 Flow Line of Sewer to be constructed shown by Red Line Thus